

# TIME

TOWARDS  
INTEGRATED  
WATER  
MANAGEMENT

**Alec Rolston**

**Centre for Freshwater and Environmental Studies  
Dundalk Institute of Technology**

**Natural Organic Matter Workshop  
16<sup>th</sup> June 2016**



**81 % of survey respondents do not feel included in decisions regarding their water environment**

**95 % of survey respondents believe that local communities should have a say in how the water environment is managed**

European Union

UN SDGs

Ramsar

Aichi Biodiversity  
Targets

International

DECLG

NPWS

EPA

Teagasc

Irish  
Water

Bord na  
Mona

Water +  
Communities  
Office

Coilte

N  
G  
O  
S

Local  
Authorities

National

NFGWS

Community  
Groups

Educational  
Institutions

River Trusts

Group  
Water  
Schemes

Local



European Union

UN SDGs

Ramsar

Aichi Biodiversity Targets

International

DECLG

NPWS

EPA

Agasc

Irish  
M

Bord na  
Mona

N  
G  
O  
S

Water  
Communities

Coilt

NFGWS

Local  
Authorities

Community  
Groups

Edu  
Institutions

Trusts

Group  
Water  
Schemes

Local

European Union

UN SDGs

Ramsar

Aichi Biodiversity Targets

International

NPWS

EPA

Agasc

Water

Bord na Mona

N  
G  
O  
S

Communities Office

Co.

NFGWS

Local Authorities

International

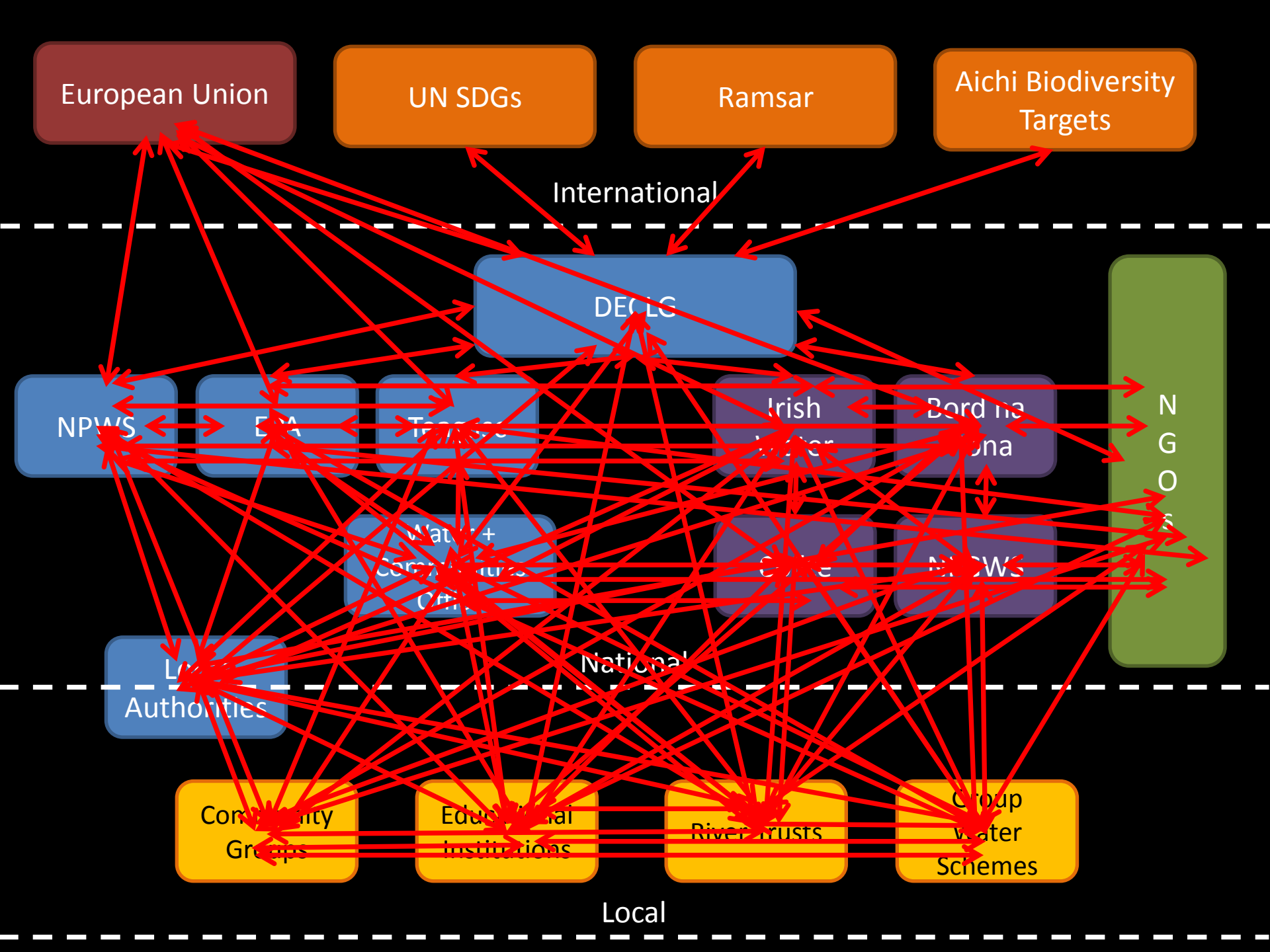
Community Groups

Institutions

River

Group Water Schemes

Local





dreamstime.com







MakeAGIF.com

MakeAGIF.com

MakeAGIF.com

MakeAGIF.com

MakeAGIF.com

MakeAGIF.com

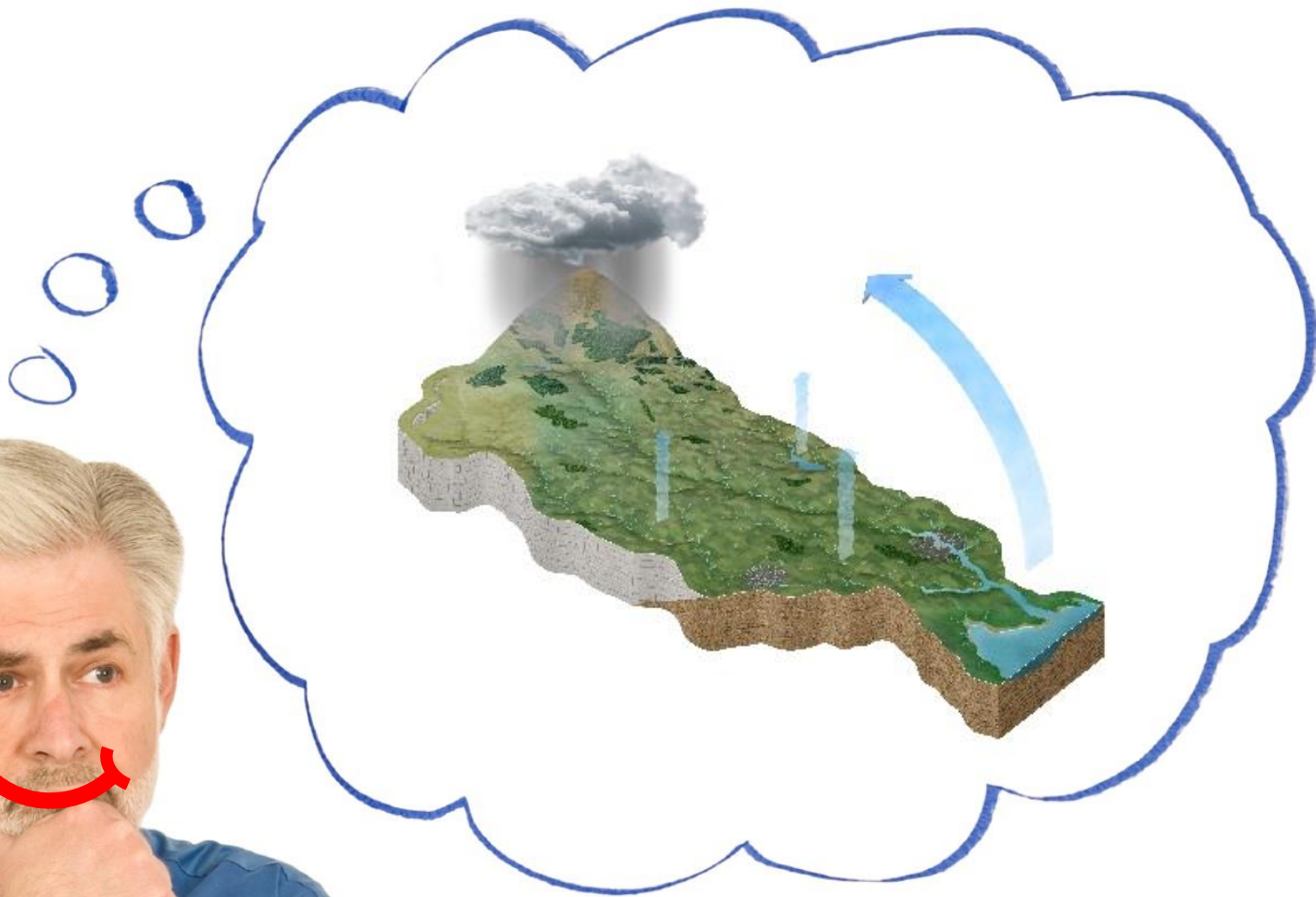
MakeAGIF.com

MakeAGIF.com

MakeAGIF.com



**My  
Locality**





## **Extra TIME Project**

***Delivering the concept of catchment services  
for progress towards integrated water  
management***

**What did a catchment ever  
do for us?**

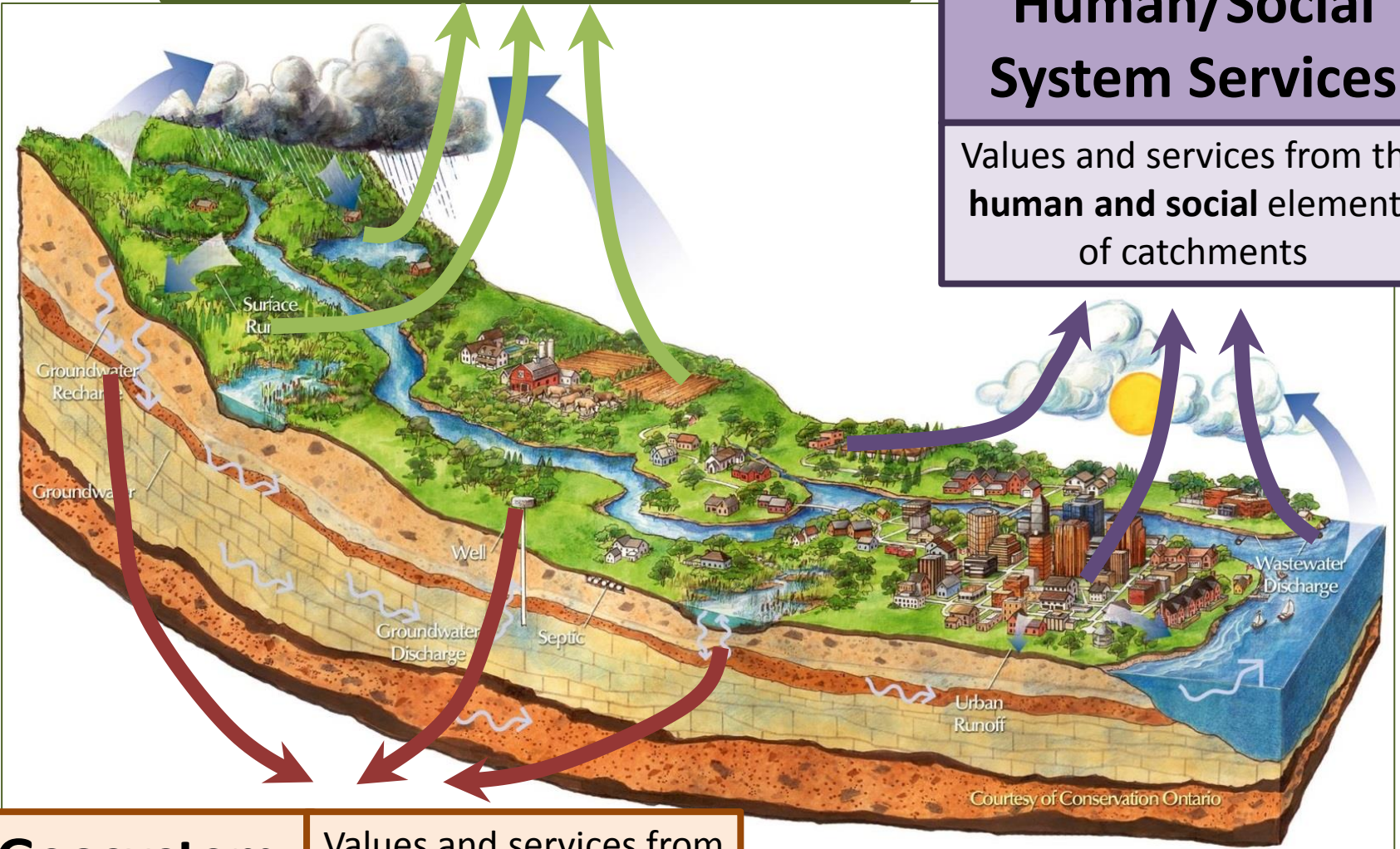


# Ecosystem Services

Values and services from the **living** elements of catchments

# Human/Social System Services

Values and services from the **human and social** elements of catchments



# Geosystem Services

Values and services from the **non-living** elements of catchments

Gap 1. Presence of a national water/ICM focussed community engagement framework, supported by policy, which encompasses the National Framework-Local Delivery Model to ensure consistency of engagement practices throughout Ireland.

Gap 2. Community-managed hubs as focal points for community access to water management/Integrated Catchment Management information and resources.

Gap 3. Strategic initiatives which encourage local businesses to support local water management initiatives

Gap 4. National initiatives. and secondary school initiatives.

[www.catchments.ie](http://www.catchments.ie)

Gap 5. Integrated Catchment Management centred citizen science initiatives that focus on local water management and water quality issues.

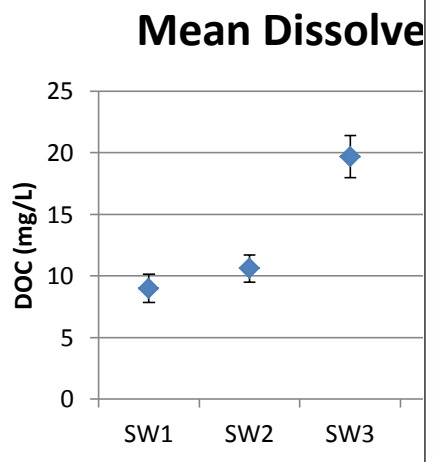
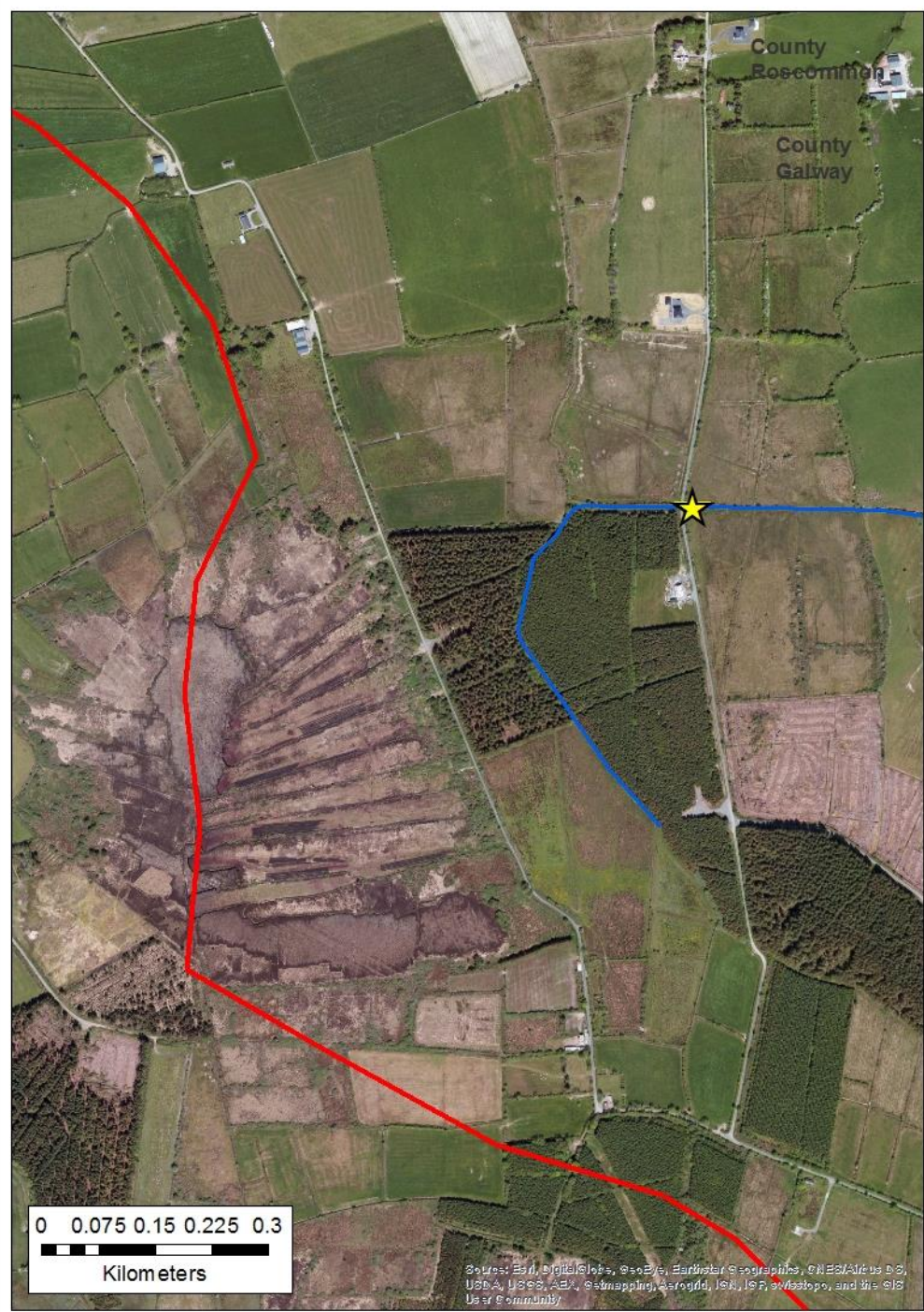
Gap 6. Local Integrated Catchment Management focussed initiatives that communities can become involved with.

Gap 7. Awareness raising of local water management issues.

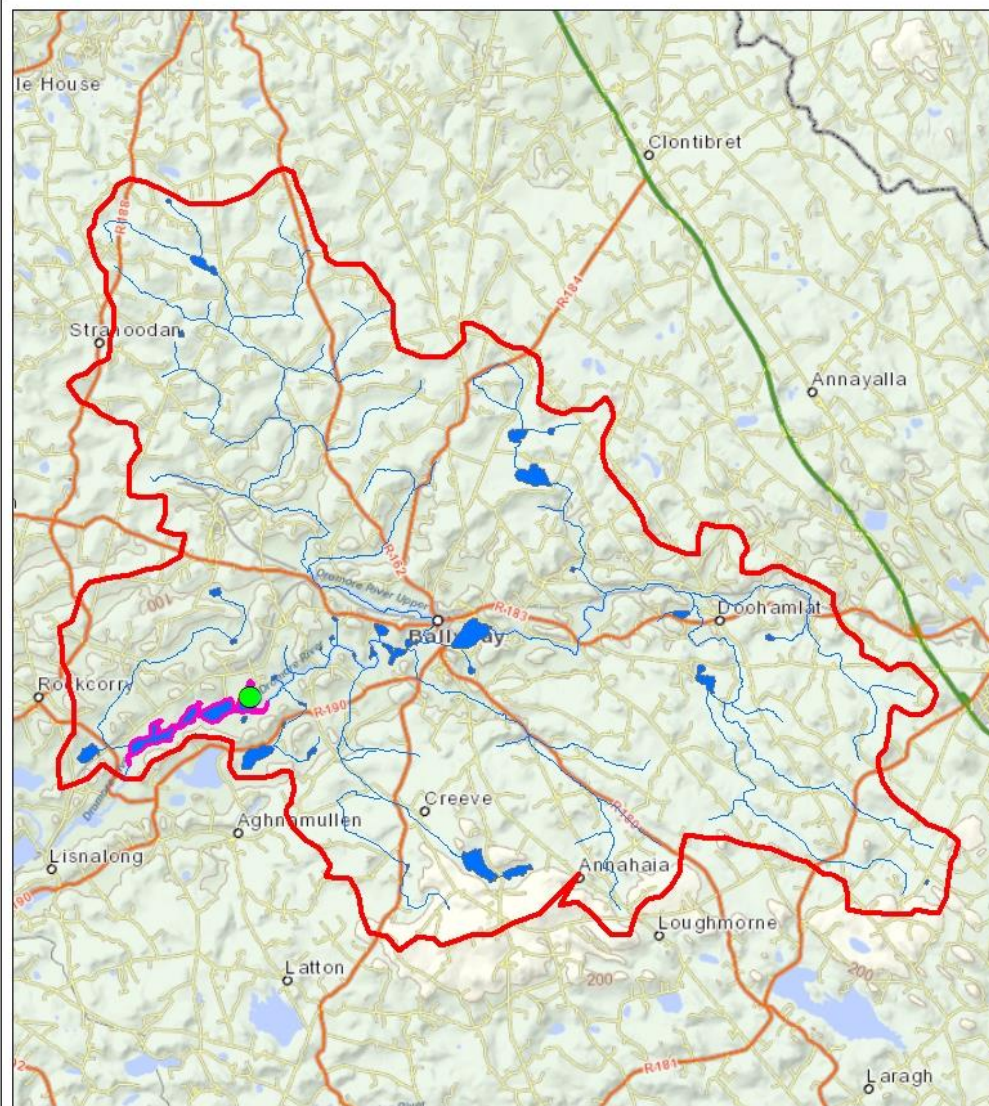
Gap 8. Appropriate monitoring and evaluation of engagement initiatives

Gap 9. A one-stop online resource which provides guidance, information and support for communities and water management professionals alike.



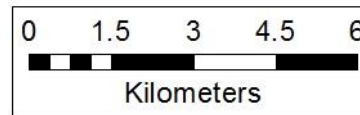


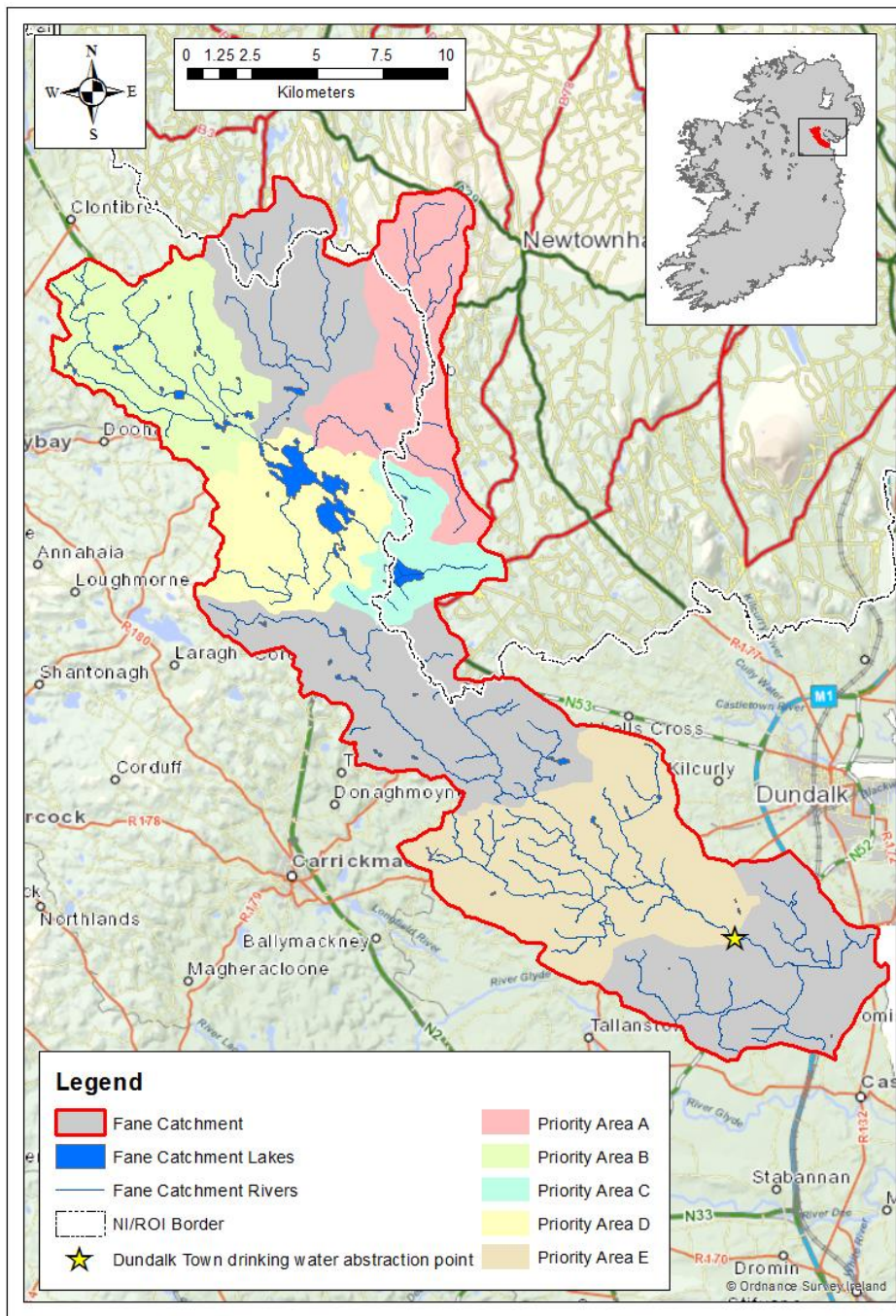
S



### Legend

- Stranooden\_Catchment
- White Lough
- Stranooden Catchment Rivers
- Stranooden Catchment Lakes
- Stranooden\_Abstraction\_Point

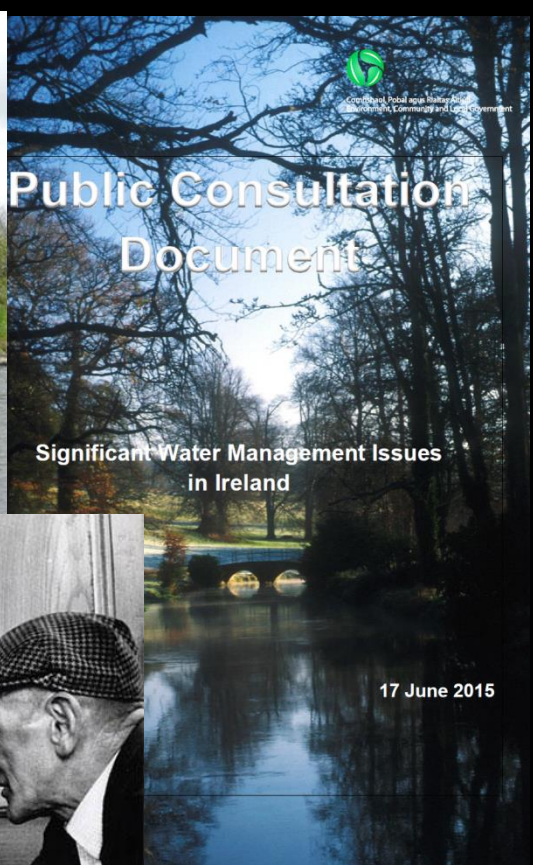




**81 % of survey respondents do not feel included in decisions regarding their water environment**

**95 % of survey respondents believe that local communities should have a say in how the water environment is managed**





# Extra TIME Project Links



## Webpage

<https://www.dkit.ie/centre-freshwater-environmental-studies/research-projects/lake-catchment-management/extra-time-project>

## Facebook

[www.facebook.com/TowardsIntegratedWaterManagementProject](http://www.facebook.com/TowardsIntegratedWaterManagementProject)

## Twitter

Extra\_TIME\_Project@Water\_DundalkIT

## Blog

<http://tugofwater.wordpress.com/>

